



DSE Genset®



DSE Ats



DEEP SEA ELECTRONICS PLC

DSE857 Configuration Suite PC Software and Operator Manual

Document Number: 057-219

Author: Tony Manton

DEEP SEA ELECTRONICS PLC

Highfield House
 Hunmanby
 North Yorkshire
 YO14 0PH
 ENGLAND



Sales Tel: +44 (0) 1723 890099
 Sales Fax: +44 (0) 1723 893303

E-mail : support@deepseapl.com
 Website : www.deepseapl.com

DSE857 Configuration Suite PC Software Manual

© Deep Sea Electronics Plc

All rights reserved. No part of this publication may be reproduced in any material form (including photocopying or storing in any medium by electronic means or other) without the written permission of the copyright holder except in accordance with the provisions of the Copyright, Designs and Patents Act 1988.

Applications for the copyright holder's written permission to reproduce any part of this publication should be addressed to Deep Sea Electronics Plc at the address above.

The DSE logo is a UK registered trademarks of Deep Sea Electronics PLC.


Any reference to trademarked product names used within this publication is owned by their respective companies.


Deep Sea Electronics Plc reserves the right to change the contents of this document without prior notice.


Amendments List

Issue	Comments	Minimum Module Version Required	Minimum Configuration Suite Version Required
1	Initial release	1	

Typeface: The typeface used in this document is *Arial*. Care should be taken not to mistake the upper case letter I with the numeral 1. The numeral 1 has a top serif to avoid this confusion.

 **NOTE:** Highlights an essential element of a procedure to ensure correctness.

 **CAUTION!:** Indicates a procedure or practice which, if not strictly observed, could result in damage or destruction of equipment.

 **WARNING!:** Indicates a procedure or practice which could result in injury to personnel or loss of life if not followed correctly.

© Deep Sea Electronics Plc owns the copyright to this manual, which cannot be copied, reproduced or disclosed to a third party without prior written permission.

TABLE OF CONTENTS

1	BIBLIOGRAPHY	4
2	DESCRIPTION	4
3	SPECIFICATIONS.....	5
4	DSE CONFIGURATION SUITE PC SOFTWARE	7
4.1	EDIT CONFIG	7
4.1.1	SCREEN LAYOUT.....	7
4.1.2	DSE857 CONFIGURATION	7
4.2	UTILISING THE DSE857	8
4.2.1	CONNECTING USING DSE CONFIGURATION SUITE PC SOFTWARE.....	8
4.2.2	CONNECTING USING A THIRD PARTY MODBUS MASTER.....	8
5	MAINTENANCE, SPARES, REPAIR AND SERVICING.....	9
5.1	WARRANTY	9
5.2	DISPOSAL.....	9
5.2.1	WEEE (WASTE ELECTRICAL AND ELECTRONIC EQUIPMENT).....	9

1 BIBLIOGRAPHY

This document refers to and is referred to by the following DSE publications which can be obtained from the DSE website www.deepseapl.com:

DSE Part	Description
053-169	DSE857 Installation Instructions

2 DESCRIPTION

This manual covers the operation and the **DSE Configuration Suite** for DSE857 USB to RS485 Converter. Separate manuals cover the remaining DSE modules supported by the software.

The DSE857 acts as a modbus RTU slave device. Queries from the modbus master are received by the RS485 port, and relayed (Modbus Passthrough) to the DSE controller connected to the USB port. This controller replies to the query which is received by the DSE857 USB port, and returned back to the Modbus RTU master by the DSE857 RS485 port.

The **DSE Configuration Suite** allows the DSE857 module to be connected to a PC. Once connected the various operating parameters within the module can be viewed or edited as required by the engineer.

The DSE Configuration Suite PC Software must only be used by competent, qualified personnel, as changes to the operation of the module may have safety implications on the panel to which it is fitted. The information contained in this manual should be read in conjunction with the information contained in the appropriate module documentation. This manual only details which settings are available and how they may be used.

A separate manual deals with the operation of the individual module (See section entitled *Bibliography* elsewhere in this document).

3 SPECIFICATIONS

3.1 POWER SUPPLY

Minimum Supply Voltage	8 V continuous, 4 V for up to 5 minutes.
Cranking Dropouts	Able to survive 0 V for 100 mS providing the supply was at least 8 V before the dropout and recovers to 8 volts afterwards.
Maximum Supply Voltage	32 V continuous (transient protection to 64 V)
Power Up Current	3 A transient inrush at initial power up.
Typical Operating Current	60 mA at 12 V DC, 35 mA at 24V DC

3.2 TERMINAL SPECIFICATION

Connection Type	Screw terminal, rising clamp, no internal spring
Min Cable Size	0.5 mm ² (AWG 20)
Max Cable Size	2.5 mm ² (AWG 14)

3.3 USB HOST CONNECTOR

This USB type A socket provides support for connection to one DSE controller. Use USB type A to USB type B cable.

 **NOTE: DSE stock a USB suitable cable for this purpose. Part number 016-125.**

3.4 RS485 CONNECTOR

This socket provides support for connection to a modbus master device such as a PC with RS485 port or a Building Management System (BMS), PLC or other modbus master device.

Ensure termination resistors (120Ω) are fitted to the ends of the link as per RS485 standard.

3.5 DIMENSIONS

Parameter	Description
Overall Size	35.0 mm x 96.9 mm x 102.2 mm (1.34" x 3.81" x 4.02")
Mounting Type	DIN rail EN 50022 35 mm type only Indoor Use Only
Maximum Ambient Operating Temperature	50 °C (122 °F)
Weight	140 g (4.9 oz)

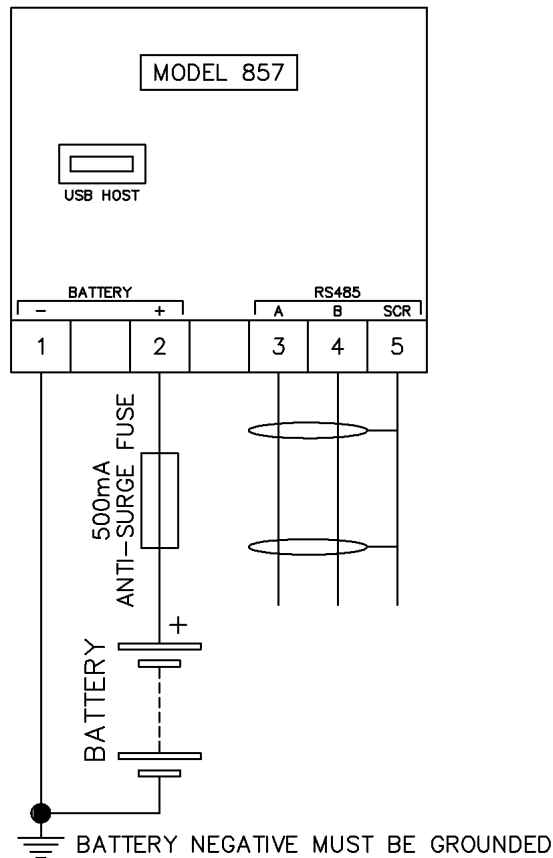
3.6 INSTALLATION

The DSE857 is designed to be mounted within a control panel, either on the panel DIN rail utilising the integral mounts, or chassis mounted, utilising the mounting holes. For dimension and mounting details, see the section entitled *Specification, Dimensions* elsewhere in this document.

3.7 USER CONNECTIONS

Terminal	Function	Recommended size
1	DC Supply Negative	1.0 mm ² (AWG18)
2	DC Supply Positive	1.0 mm ² (AWG18)
3	RS485 A	Two core screened twisted pair cable. 120 Ω impedance suitable for RS485 use. Recommended cable type - Belden 9841 Max distance 1200 m (1.2k m) when using Belden 9841 or direct equivalent. Ensure termination resistors (120 Ω) are fitted to the ends of the link as per RS485 standard.
4	RS485 B	
5	RS485 Screen	

3.8 TYPICAL WIRING DIAGRAM



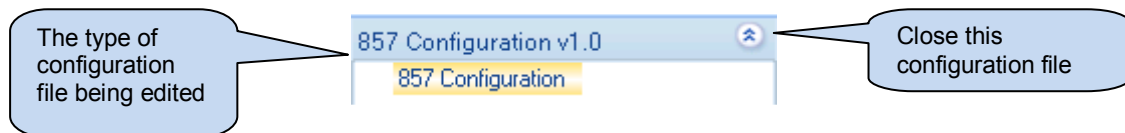
4 DSE CONFIGURATION SUITE PC SOFTWARE

For information in regards to installing and using the DSE Configuration Suite Software please refer to DSE publication: **057-151 DSE Configuration Suite PC Software Installation & Operation Manual** which can be found on our website: www.deepseapl.com

4.1 EDIT CONFIG

This menu allows module configuration to suit a particular application.

4.1.1 SCREEN LAYOUT



4.1.2 DSE857 CONFIGURATION

This section allows the RS485 port (Modbus Slave) to be configured. The DSE857 contains two Modbus Slaves, Configuration and Modbus Passthrough.

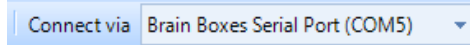


Parameter	Description
Baud Rate	Factory Setting: 19200 Baud rate of the RS485 port.
857 Configuration Slave ID	Factory Setting: 10 The Modbus Slave ID of the DSE857 RS485 port for Configuration. This is the Slave ID that is used by the DSE Configuration Suite PC Software for configuration of the DSE857.
Modbus Passthrough Slave ID	Factory Setting: 11 The Modbus Slave ID of the DSE857 RS485 port for <i>Modbus Passthrough</i> . This is the Slave ID that is used. by the Modbus Master device used to query the DSE controller connected to the DSE857 USB port. Modbus Requests sent to this address are relayed (Passthrough) to the DSE controller connected to the USB port.

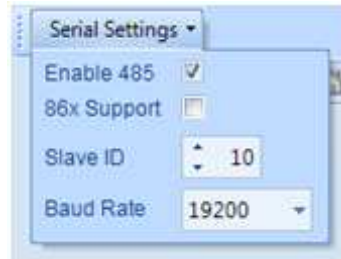
4.2 UTILISING THE DSE857

4.2.1 CONNECTING USING DSE CONFIGURATION SUITE PC SOFTWARE

To connect to a module via RS485, select the comport from the *Connect Via* list, for example:



Then click *Serial Settings* to configure the RS485 Port:



Parameter	Description
Enable 485	Select <input checked="" type="checkbox"/> to enable RS485 communications to the DSE857
86x Support	Select <input type="checkbox"/> when using the DSE857.
Slave ID	This must be set to the <i>857 Configuration Slave ID</i> setting in the DSE857 to be communicated with.
Baud Rate	This must be set to the <i>Baud Rate</i> setting of the DSE857 to be communicated with.

DSE Configuration Suite is now correctly configured to communicate with the DSE Controller connected to the DSE857 USB port.

For information in regards to setting up the DSE controller connected to the DSE857 USB port, refer to the relevant Configuration Suite PC Software Manual which can be found on our website: www.deepseapl.com.

4.2.2 CONNECTING USING A THIRD PARTY MODBUS MASTER

The DSE857 RS485 port is a modbus RTU Slave. There are two modbus Slave IDs associated with the port as detailed in the section entitled *DSE857 Configuration* elsewhere in this document.

The Modbus Master must be configured to communicate with the *Modbus Passthrough Slave ID* of the DSE857.

Modbus queries from the master are received by this port, and relayed (Modbus Passthrough) to the DSE controller connected by USB to the DSE857.

This controller replies to the query which is received by the DSE857 USB port, and return back to the Modbus RTU master by the DSE857 RS485 port.

The host DSE controller has addressable registers as defined in the DSEGencomm Document.

This and other DSEGencomm training documents are available from DSE Technical Support upon request from support@deepseapl.com.

DSE Part Number	Document Name	Description
056-080	Modbus.pdf	Describes the different types of Modbus.
056-078	DSEGencomm.pptx	Training Presentation about Modbus on DSE products.
056-079	Gencomm Status.pptx	Training Presentation about alternative ways to read status information from the DSE controller.
056-051	Gencomm Control Keys	Training Document describing how to control the DSE module using Modbus.
056-076	Gencomm Alarms	Describes how to read alarm status information from the DSE controller.
N/A	Gencomm	Describes the DSE controller's modbus register mapping.

5 MAINTENANCE, SPARES, REPAIR AND SERVICING

The module is designed to be *Fit and Forget*. As such, there are no user serviceable parts. In the case of malfunction you should contact your original equipment supplier (OEM).

If you require additional plugs from DSE, please contact our Sales department using the part numbers below.

Terminal	Description	Part No.
1-5	5 way 5.08mm	007-445
USB	USB A to USB B (DSE857 to host controller)	016-125

5.1 WARRANTY

DSE provides limited warranty to the equipment purchaser at the point of sale. For full details of any applicable warranty, you are referred to your original equipment supplier (OEM).

5.2 DISPOSAL

5.2.1 WEEE (WASTE ELECTRICAL AND ELECTRONIC EQUIPMENT)

If you use electrical and electronic equipment you must store, collect, treat, recycle and dispose of WEEE separately from your other waste.



This Page is Intentionally Blank